



nature's service partner

[www.nurture-group.co.uk](http://www.nurture-group.co.uk)



nature's service partner

nature's service partner



# ABOUT US

The Nurture Landscapes Group is an award winning national service provider consisting of three leading companies; Nurture Landscapes, Gavin Jones, and Rokill Pest Control Services.

Nurture Landscapes specialise in grounds maintenance, winter gritting and office, interior and exterior plant display services, predominantly to the corporate sector.

Gavin Jones provide landscape construction services to a wide variety of clients across the UK, working alongside landscape architects, designers and main contractors. They also provide grounds maintenance services to military sites, public open spaces, the

educational sector and royal parks and palaces, and are proud holders of the Royal Warrant To Her Majesty The Queen.

Rokill provide pest control services to both commercial and domestic customers and the public sector. They hold the Royal Warrant for pest control To Her Majesty The Queen and are one of the UK's leading pest control companies.

Our clients span across a diverse and broad range of disciplines, from corporate headquarters, shopping centres, business and industrial parks, to leisure facilities, schools, sporting venues, hotels, universities, and public open spaces.

[www.nurture-group.co.uk](http://www.nurture-group.co.uk)



nature's service partner



# GROUNDS MAINTENANCE



Nurture Landscapes provide grounds maintenance services predominantly to the corporate sector.

We have a national presence and capability that is delivered via talented directly employed local teams working out of 70 strategically placed depots across the UK.

Our teams are supported by a robust local, regional and national management team structure, which enables us to deliver a highly flexible, personal and local service to consistently high standards at each of our clients' properties, wherever they may be in the country.

We have a wealth of experience in the Property Management and FM sectors, and have the knowledge and resources to safely maintain the grounds of a single business park property with a full time presence, through to a large multi-site portfolio serviced through local mobile teams.

We engage with clients to provide added value events and seasonal workshops for their guests, and invest and look to build long term relationships with our clients, with innovation and proactive management at the heart of our offering.

[www.nurturelandscapes.co.uk](http://www.nurturelandscapes.co.uk)





enhancing the landscape



# GROUNDS MAINTENANCE



Gavin Jones are proud holders of the Royal Warrant to her Majesty the Queen for landscape maintenance, and strive for excellence in all aspects of its work.

Mainly focusing on military sites, public open spaces, royal parks and palaces, Gavin Jones are passionate about enhancing the landscape and the environments in which they work.

Our grounds maintenance teams aim to maximise your outdoor space through proactive efficient cost effective management.

With a flexible attitude to client requirements, regular communication and health and safety awareness, our fully trained specialist grounds maintenance teams offer a professional and diverse range of land management skills, using latest technology, equipment and 'best practice' grounds maintenance techniques.

We have a national presence and capability that is delivered via talented directly employed local teams working out of strategically placed depots across the UK.

[www.gavinjones.co.uk](http://www.gavinjones.co.uk)







enhancing the landscape



# LANDSCAPE CONSTRUCTION



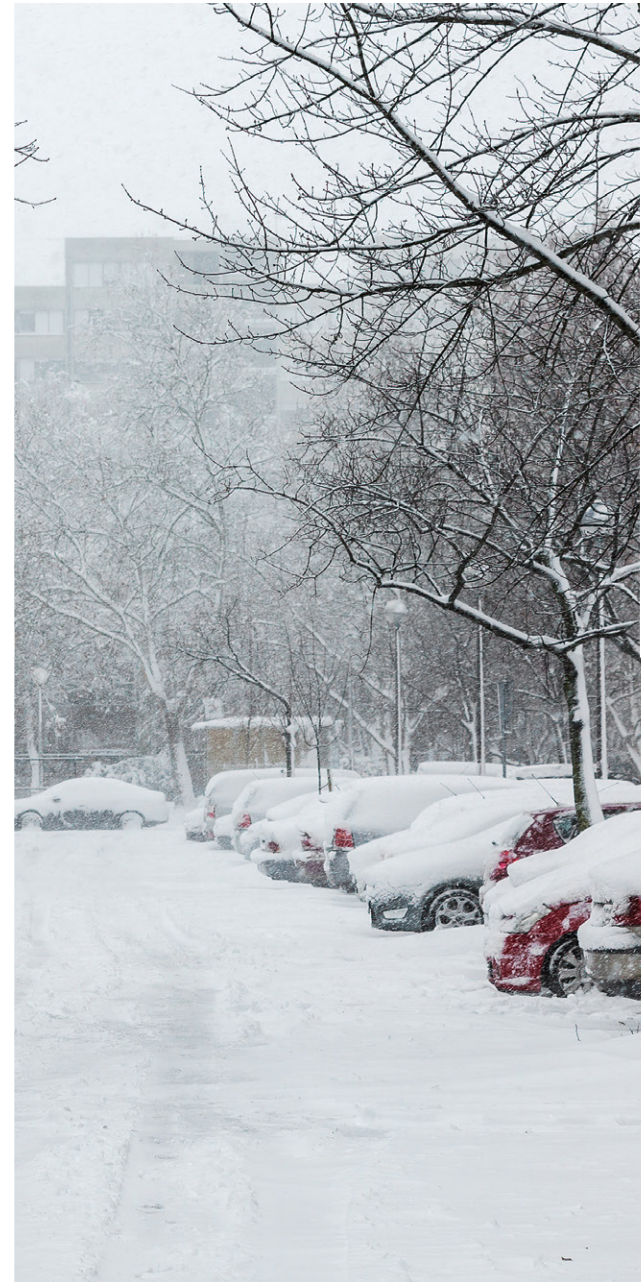
Gavin Jones provide a full landscape construction service to a wide variety of clients, working alongside leading landscape architects, designers and main contractors. From soft and hard landscaping projects, to regeneration and restoration works, for both commercial and private clients across the UK.

With an enviable reputation for premium quality service delivery and a flexible attitude, our dedicated and experienced staff offer a diverse range of professional project management capability.

Whether the preference is for a negotiated, partnered design & build, or a more traditional style contract, Gavin Jones commercial landscape team will ensure all aspects of the specification are delivered in a timely and cost-effective manner, with the aim of not only meeting but exceeding our clients' expectations.

[www.gavinjones.co.uk](http://www.gavinjones.co.uk)





nature's service partner



# WINTER GRITTING



Ice and snow pose real dangers, and the safety of occupiers and visitors is an onerous responsibility for any business. We can remove this risk by providing winter gritting services and a rapid response to deteriorating weather conditions across the UK.

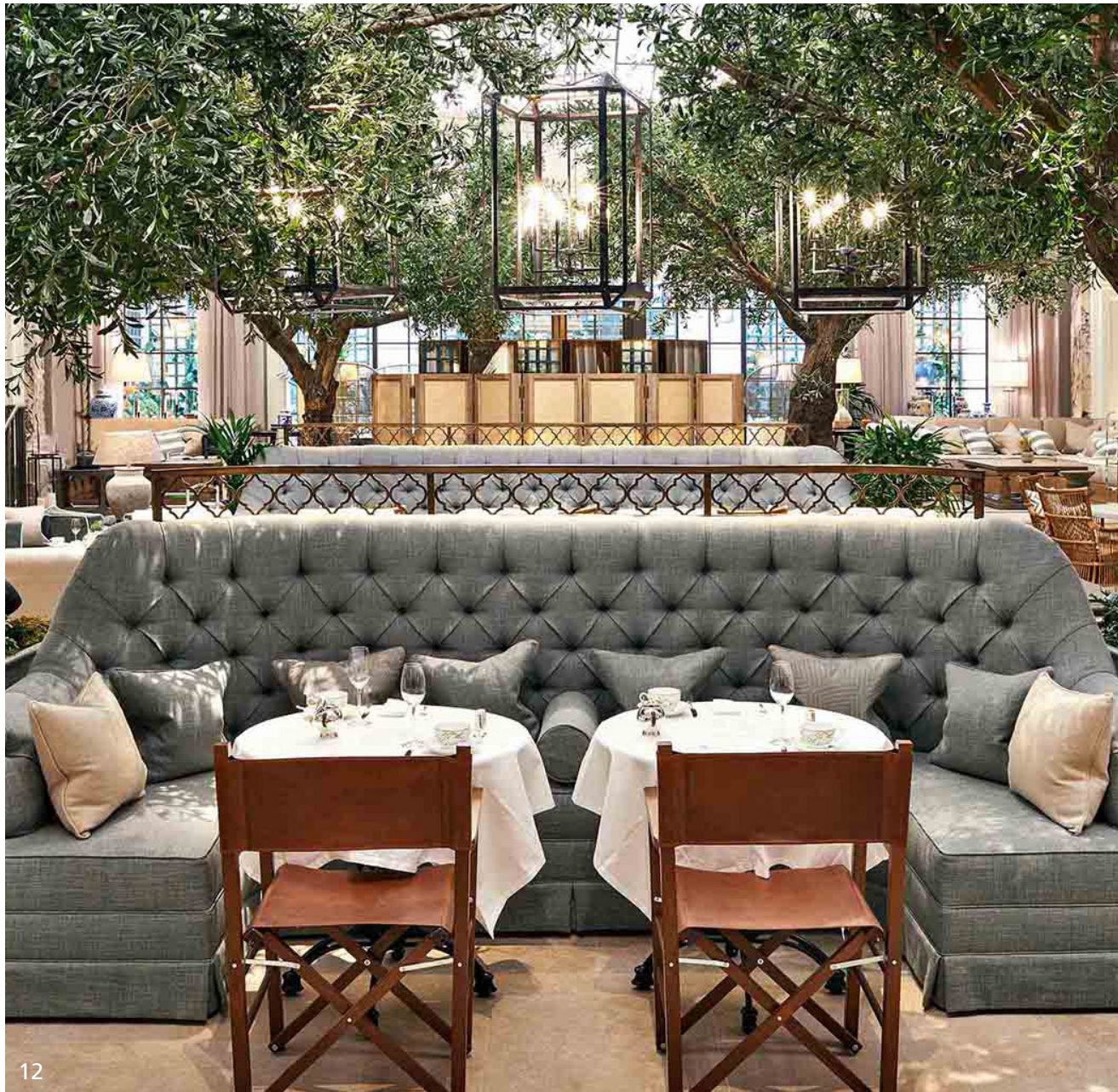
Our winter gritting service is provided and carried out by the Nurture Landscapes dedicated gritting division, who hold the Met Office Gold Quality Mark and closely monitor the weather conditions across the UK in partnership with the Met Office's daily Weather Forecasting System.

Our significant fleet comprising of 18 tonne and 7.5 tonne gritting lorries, flat-bed trucks, adapted transit vans and tractors, are on standby every day of the gritting season, from the start of October to the end of April, and we store over 2000 tonnes of loose salt at all our major regional depots across the UK.

The complexity of our systems ensures that every site receives a very simple promise, to provide the correct service, at the correct time, with the correct equipment...every time!

[www.nurturelandscapes.co.uk](http://www.nurturelandscapes.co.uk)





nature's service partner



# PLANT DISPLAYS



Nurture provide a full plant display service, ranging from office and interior plants to exterior planting, hanging baskets, floristry, green walls and Christmas trees for corporate, leisure and retail clients across the UK.

Long recognised for their aesthetic properties, living plants have proven benefits for health and wellbeing, especially in service intensive modern buildings. Not only do they make environments more attractive but plants also absorb airborne toxins and regulate humidity, creating a healthier, happier, and more creative atmosphere.

Whether designed for a single site or rolling out across a corporate scheme, we ensure every plant or display is appropriate for the location, and we will keep it looking perfect via an ongoing maintenance programme.

A regular supply of fresh plants and flowers brightens and lifts any environment, from reception areas and lobbies to corporate offices and hospitality venues.

Using a combination of home grown and ethically sourced plants, Nurture's experienced team can create an array of designs, from classic simplicity to opulence and elegance.

[www.nurturelandscapes.co.uk](http://www.nurturelandscapes.co.uk)





pest control services



# PEST CONTROL



Rokill have been established for over 40 years, providing commercial pest and bird management and are proud holders of the Royal Warrant To Her Majesty The Queen for Pest Control Services.

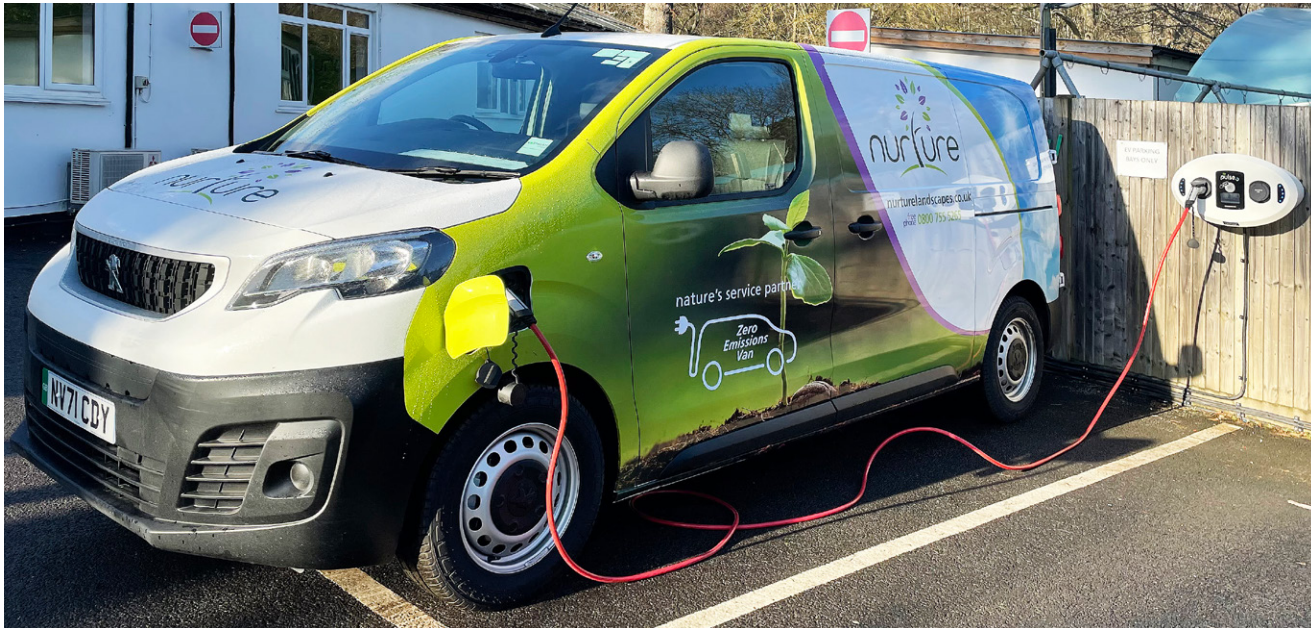
Rokill are members of the British Pest Control Association, operating one of the highest supervisor to technician ratios in the pest control industry, enabling standards to be maintained in accordance with a commitment to total quality and client satisfaction.

Rokill are one of the few pest control companies to have achieved ISO 9001 (Quality), ISO 14001 (Environmental) and ISO 45001 (Occupational Health & Safety) standards, and also hold the RoSPA Order of Distinction.

Rokill are an Investors In People Gold standard company.

[www.rokill.co.uk](http://www.rokill.co.uk)







nature's service partner



# SUSTAINABILITY

## Environmental, Social and Governance

In the modern world, to avoid the depletion of natural resources and maintain an ecological balance, we as individuals, and as a business, all have a commitment to help in its preservation to ensure environmental resources will be protected and maintained for our future generations.

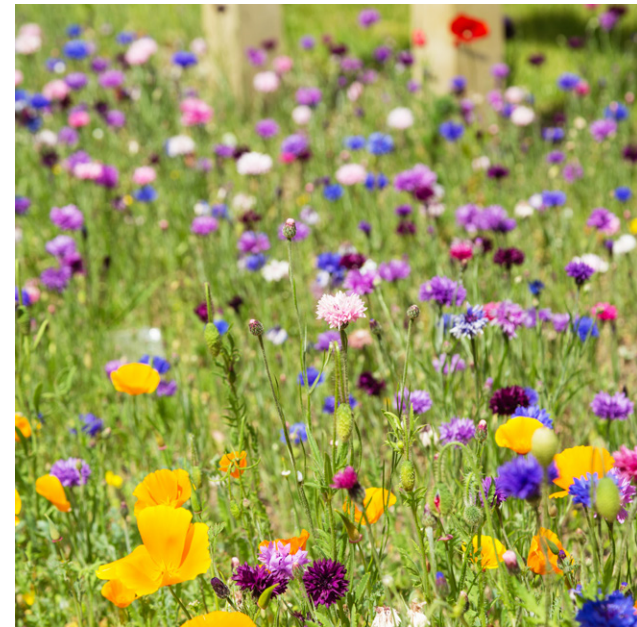
We are ISO 14001 and ISO 50001 accredited and are platinum members of the Green Organisation. Our operations are constantly reviewed to ensure clients benefit from initiatives to reduce carbon and improve energy efficiency.

We work closely with suppliers to identify materials and techniques that minimise environmental impact and have installed solar panels at our Head Office and electric charging points at all regional offices.

We replace existing fossil fuel machinery with electric tools which have zero carbon emissions, and over 60% of our traditional petrol and diesel management cars have been replaced with hybrid/electric vehicles, with an objective to increase this ratio year on year.

We are carbon neutral in accordance with the global PAS 2060 standard with the vision to be net zero by 2030.

[www.nurture-group.co.uk](http://www.nurture-group.co.uk)

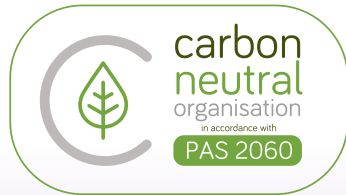






nature's service partner

# AWARDS & ACCREDITATIONS



As a business we strive to deliver a quality of work that will exceed client expectations and set new benchmarks for excellence.

This unwavering commitment has been recognised with numerous awards across a variety of sectors and disciplines which reflect the strength in depth across the company.

Supporting and guiding all that we do and how we operate, are our ISO 9001 (Quality), ISO 14001 (Environmental), ISO 45001 (Health & Safety) and ISO 50001 (Energy management) accreditations.

We are a real living wage employer and are carbon neutral in accordance with the global PAS 2060 standard, working to be net zero by 2030, and are Platinum members of the Green Organisation.

We are delighted to have won awards for our work relating to protecting the environment such as the Green Flag and Green Apple Awards. These awards recognise the partnerships we have formed with our clients, which are founded on trust, a shared understanding and common goals.

[www.nurture-group.co.uk](http://www.nurture-group.co.uk)



Our clients include...



CHISWICK PARK  
ENJOY-WORK



Lambert  
Smith  
Hampton



VIVO



MAPP





#### **Regional Offices**

Cumbernauld  
Kilmarnock  
Mirfield  
Blackburn  
Nottingham  
Upminster  
St Albans  
Windlesham  
Bristol

#### **Nurture Landscapes Ltd Gavin Jones Ltd**

*Head office address:*

Nursery Court  
London Road  
Windlesham  
Surrey  
GU20 6LQ

**E** [info@nurturelandscapes.co.uk](mailto:info@nurturelandscapes.co.uk)  
[info@gavinjones.co.uk](mailto:info@gavinjones.co.uk)  
**T** 0800 755 5265

#### **Rokill Ltd**

*Head office address:*

Rossland House  
Headlands Business Park  
Ringwood  
Hampshire  
BH24 3PB

**E** [info@rokill.co.uk](mailto:info@rokill.co.uk)  
**T** 0800 783 0011

**[nurture-group.co.uk](http://nurture-group.co.uk)**